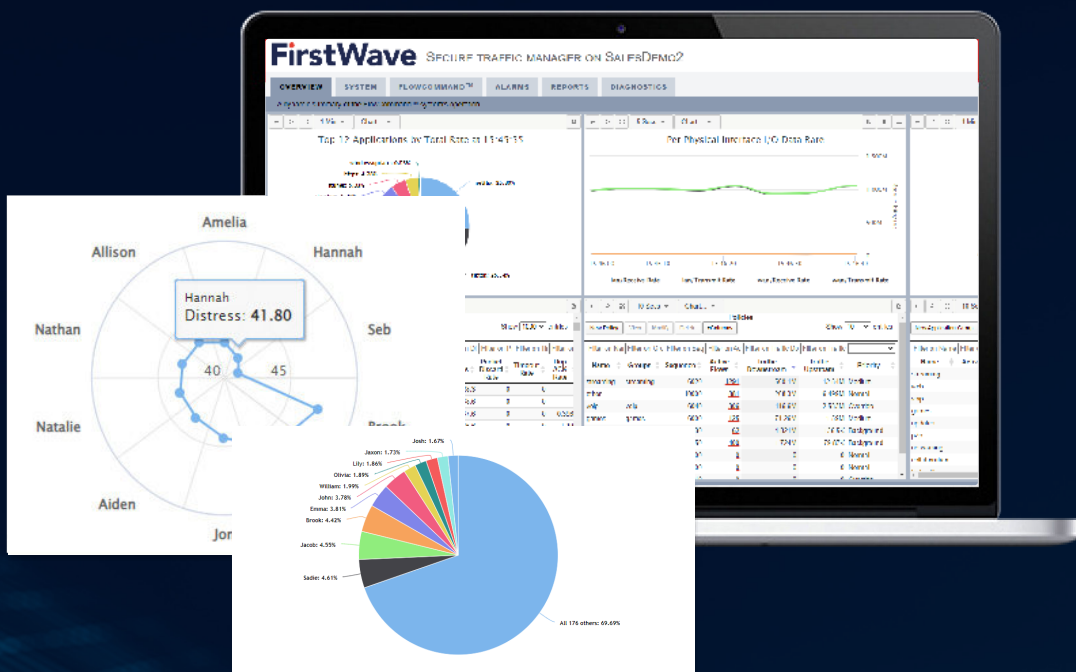


FirstWave

REAL-TIME NETWORK VISIBILITY, ANALYTICS, AND CONTROL



Next-generation Quality of Service (QoS) and host equalisation



Optimise network infrastructure to handle increased load whilst reducing operational expenditure



Software, not appliance – runs on commodity hardware or in a virtual environment

Improve customer experience while reducing costs. *Possible? It is with FirstWave!*

Get more out of your existing network

Traditionally, networks are required to run at 50-60% link utilisation to cater for bursts in TCP/IP traffic. FirstWave allows you to run your links at 95-100% utilisation without impacting user experience.

Traditional QoS is not good enough

Traditional QoS relies on antiquated techniques of queuing and packet shaping, delivering brute-force QoS that drops sessions even at 50% link utilisation. Through flow-technology, FirstWave manages the flow end-to-end, delivering an assured user experience.

Improve Video Delivery

With video accounting for over 70% of internet traffic and rapidly increasing, service providers need to manage video traffic efficiently to survive. FirstWave's flow-management algorithms effectively manage flow rates without stalling sessions. No more buffering video!

Reduce overheads in network management and decrease customer cost to serve

Through real-time granular network visibility, FirstWave provides you with the tools required to instantly identify problems on your network. By analysing each and every flow (not samples), network managers can efficiently manage problems on the network. Additionally, customer complaints can be quickly and accurately identified resulting in a higher first call resolution rate.

BIG DATA MADE SMALL WITH ACTIONABLE ANALYTICS

Know exactly what is happening on your network—by user, application, geolocation, BGP AS—all in real time, viewable in user-friendly, easy-to-understand dashboards. FirstWave intelligently summarises billions of data points into 40 key metrics to provide actionable analytics with the ability to deep-dive through flexible queries. Additionally, FirstWave's machine learning capabilities quickly "learn" normal network behaviour and automatically alert when abnormalities occur.

In REAL Real Time

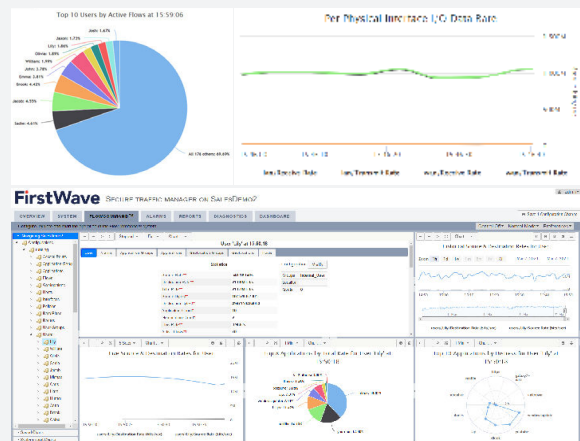
Don't miss critical occurrences on your network due to time delays in receiving data. With FirstWave, you get 100% visibility in real time. Unlike Netflow collectors who need to store/forward and then report, FirstWave provides real-time visibility of every single flow (not samples) without introducing large network overhead.

Detailed Historical Reports on Demand

Troubleshoot occurrences on your network historically, on demand. FirstWave stores key network data for two years, providing you with retrospective detailed analysis of every single stored data point.

User-friendly Drag-and-Drop Dashboards

FirstWave's intuitive dashboards mean that operators can start obtaining meaningful network insights and intelligence right away. Additionally, all data is also available through advanced REST-API allowing full integration into third-party applications.



NETWORK PERFORMANCE ENFORCEMENT

You can't fix what you can't see. FirstWave provides you with in-depth granular visibility and the ability to set policies to correct under-performing applications and/or users.

Improve Video Delivery

Network managers are constantly faced with having to make a trade-off between high-quality video, or acceptable internet experience. Video is susceptible to buffering due to limited bandwidth, particularly during congestion. Additionally, video quality may constantly switch as a result of inconsistent bandwidth and sessions are prone to stalling, requiring user intervention.

FirstWave's Secure Traffic Manager (STM) provides seamless, high-quality video streaming by controlling packet drops to prevent buffering stalls and dropped video sessions. This means that smooth traffic is provided which prevents switches between video resolution, and network managers are able to prioritise video without degrading other bandwidth users.

Host Equalisation (Fair Use)

Stop your network from becoming overloaded by a few high-consumption users. Protect the overall integrity of your network, and maximise the experience for all users by applying FirstWave's advanced fair use capabilities. Through easily configurable policies, service providers can elect to either provide fair use across all users, or in a tiered approach where certain groups of users or applications are provided with additional bandwidth. Groups can easily be defined against Service Provider rate plans.

"FirstWave's Secure Traffic Manager gave me the feature set I wanted from a visibility and analytics standpoint at the same price as the Netflow software solutions, and I gained much more granular visibility and traffic management I wouldn't have gotten from any of them. Smoothing out the Netflix traffic was one of my biggest concerns, but the combination of much deeper, real-time visibility, analytics, and control that I got from STM was a huge win for us."

*Jason Guinn, Head of Network Operations,
WIZ Tech*

FirstWave

Learn more at

www.firstwave.com